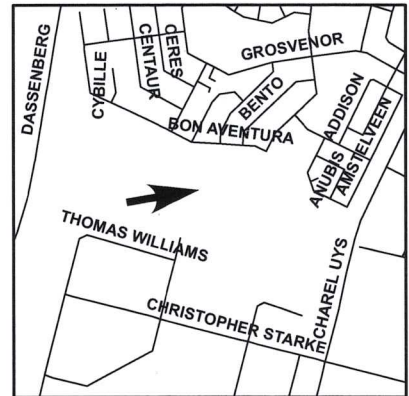


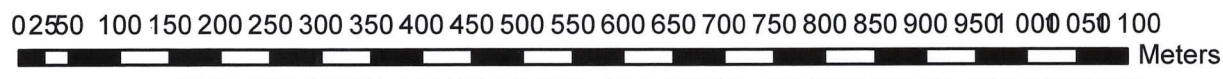
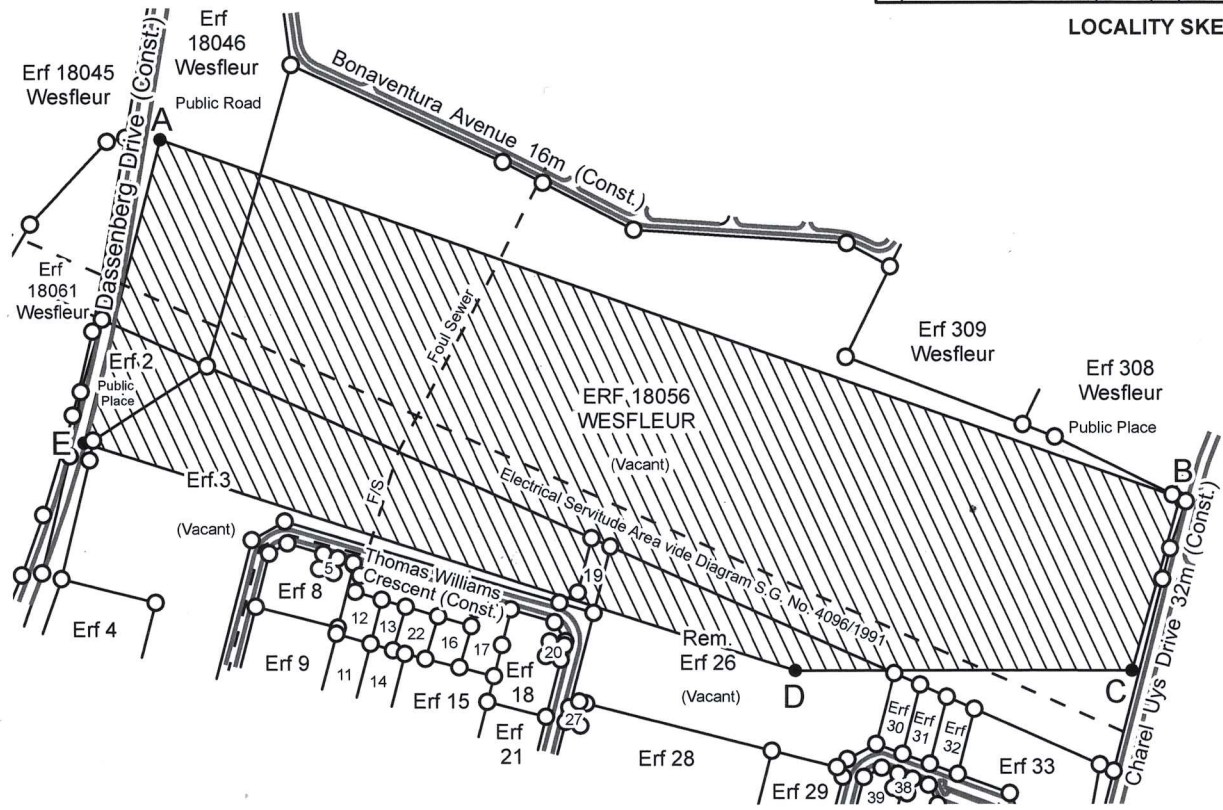
Appendix M: Properties Map

CITY OF CAPE TOWN - PROPERTY MANAGEMENT

DIMENSIONS IN METRES	
AB	± 1072,0
BC	± 177,0
CD	± 333,8
DE	± 740,6
EA	± 310,1



LOCALITY SKETCH



APPLICATION FOR RESERVATION OF CITY LAND - FOR THE PURPOSE OF DEVELOPING A 10MW SOLAR PV ELECTRICITY FACILITY - CHAREL UYS DRIVE - WESFLEUR

The figure ABCDE shown hatched represents City Land, (portions of Erven 18046 & 18056 Wesfleur) & (portions of Erven 2, 3, 19 and Rem. Erf 26 Atlantis Industrial) in extent approximately 297 110 square metres, applied for Reservation by

**DIRECTORATE: ENERGY & CLIMATE CHANGE
(DEPARTMENT: ELECTRICITY GENERATION & DISTRIBUTION)
BRANCH: ENERGY SUPPLY / GENERATION**

City Land Zoned: Transport 2: Public Road & Parking (Erf 18046 - Status: Public Road); Rural (Erf 18056 - Status: Ordinary Erf); Transport 2: Public Road & Parking (Erf 2 - Status: Public Place); General Industrial 1 (Erf 3 - Status: Ordinary Erf); Transport 2: Public Road & Parking (Erf 19 - Status: Ordinary Erf) & Mixed Use 1 (Rem. Erf 26 - Status: Ordinary Erf).

- Note: 1. Erven 18046 and 18056 Wesfleur is unregistered portions of Erf 2756 Wesfleur, registered in the name of the City of Cape Town by D/T 14213 dated 2015 - 03 - 20.
2. Erven 2; 3 and 19 Atlantis Industrial is unregistered portions of Erf 1 Atlantis Industrial, registered in the name of the City of Cape Town by D/T 19023 dated 1980 - 06 - 16.
3. Rem. Erf 26 Atlantis Industrial is registered in the name of the City of Cape Town by I - 2392/2016 LG.

WARD 32 SUBCOUNCIL 01 BABARA RASS REVISION: APPLICATION FOR RESERVATION.

REFER TO	Sg Shts M2083, M2084, M2089, M2088; -	PROPERTY HOLDING	Page 1 of 1	
CASE NO.	130008511		SURVEYOR	L.R. April (2021/02/26)
PROP REF	LP Key 60049667, 60086490, 93/4/5		SURVEYOR	L.R. April (2021/02/26)
FILE NO.	TYG 14/3/12/2756/1		CHECKED	de Gode
MEMO	-		SKETCH	