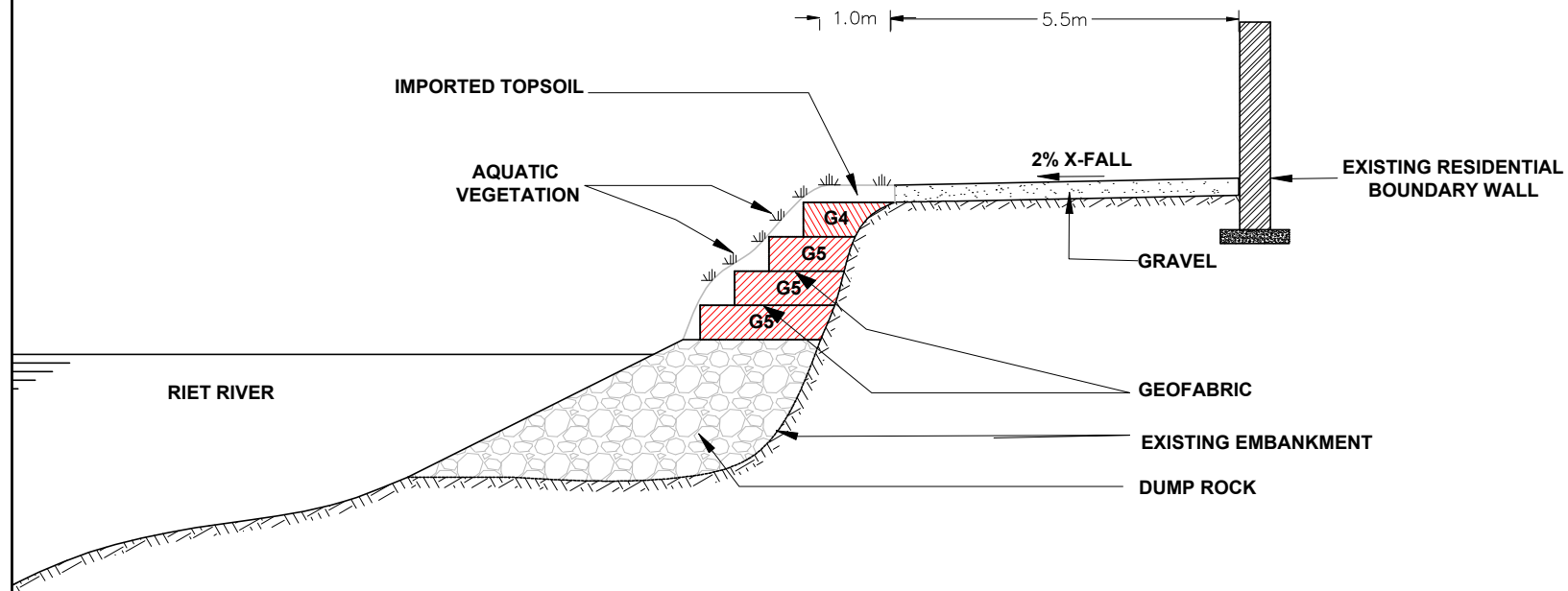


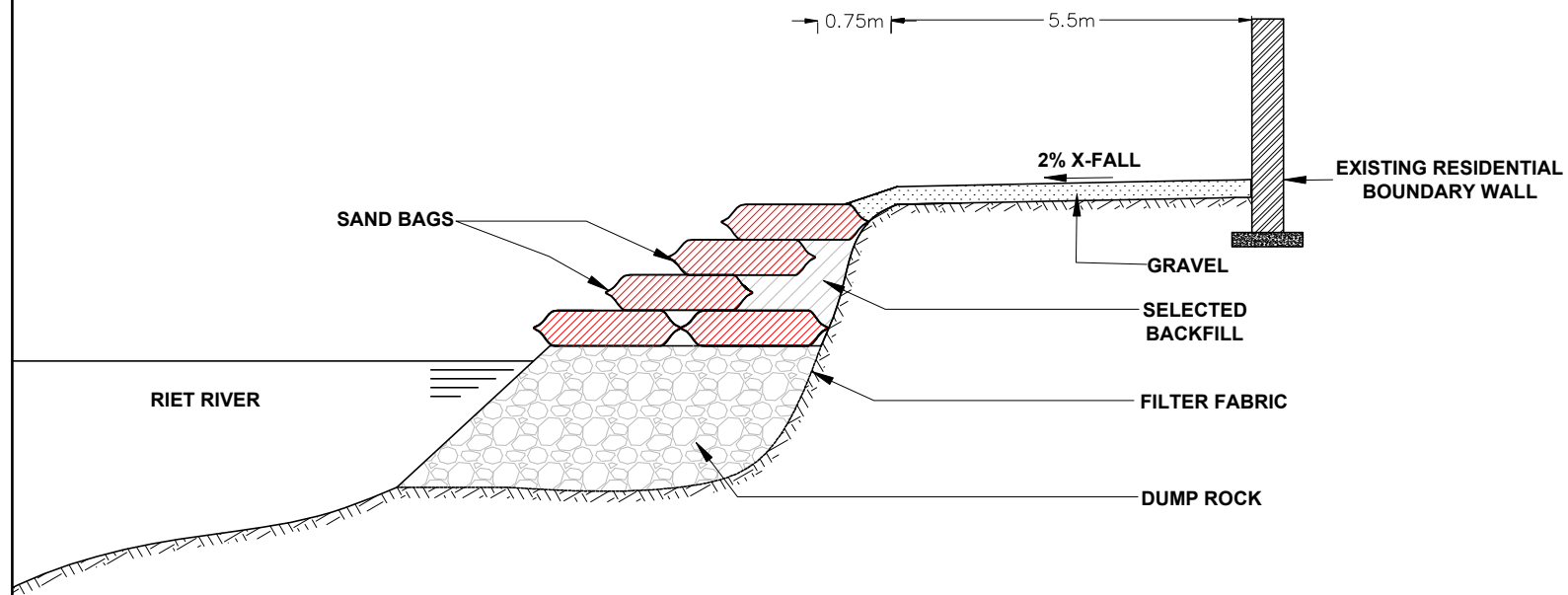
APPENDIX C: FACILITY ILLUSTRATIONS

OPTION A - DUMP ROCK AND LAYERWORKS IN GEOFABRIC



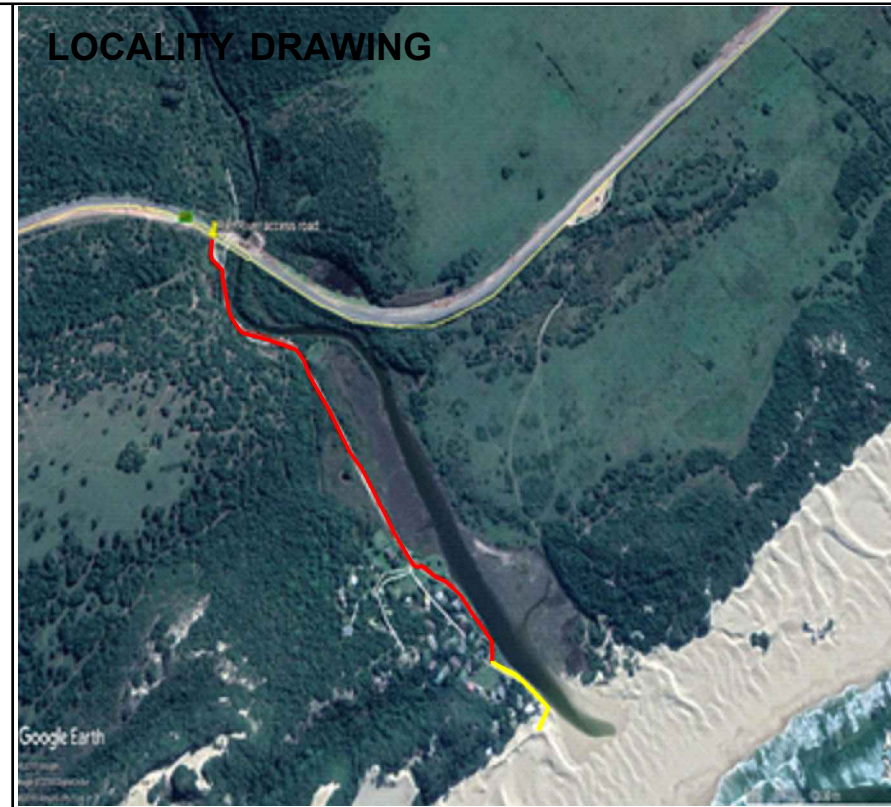
TYPICAL CROSS SECTION AT EROSION AREA

OPTION B - DUMP ROCK AND SAND BAGS



TYPICAL CROSS SECTION AT EROSION AREA

LOCALITY DRAWING



LEGEND FOR LOCALITY DRAWING

- Proposed erosion protection
- Area of concern RE possible ad hoc floods

NOTES

1. Concepts A and B indicated.
Not for construction

EROSION AREA



TYPICAL SAND BAGS



REVISION

No.	Date	Initial	Details

Client



ACCEPTANCE
ACCEPTANCE OF THIS DRAWING BY THE CLIENT IS FOR PROCEDURAL AND ADMINISTRATIVE REVIEW PURPOSES ONLY AND DOES NOT ATTRACT LEGAL LIABILITY OF ANY KIND FROM WHATSOEVER CAUSE OR HOWEVER ARISING

.....
SIGNATURE DATE

Service Provider

MSBA Madan Singh Bester & Associates cc

Consulting Civil & Structural Engineers
CK No. 2002/049044/23

29 - 6th Avenue
Newton Park
Port Elizabeth
6045
Tel : 041 365 6467
Fax : 041 365 6476

PO Box 34043
Newton Park
Port Elizabeth
6055
e-mail : info@msba.co.za
Cell no. 083 680 5575

Project

**ROUTE MAINTENANCE OF
PROVINCIAL PAVED AND GRAVEL
ROADS IN IKWEZI LMA**

Drawing Title

**RIET RIVER ACCESS ROAD:
CONCEPT OPTIONS A AND B
FOR EROSION PROTECTION**

Designed	Drawn	Checked	Approved	Date
GB	NM	GB		24-04-2015

Drawing No. **P1504-C-RS-P-G03** G. BESTER Pr. Eng. (980127) Revision **00**