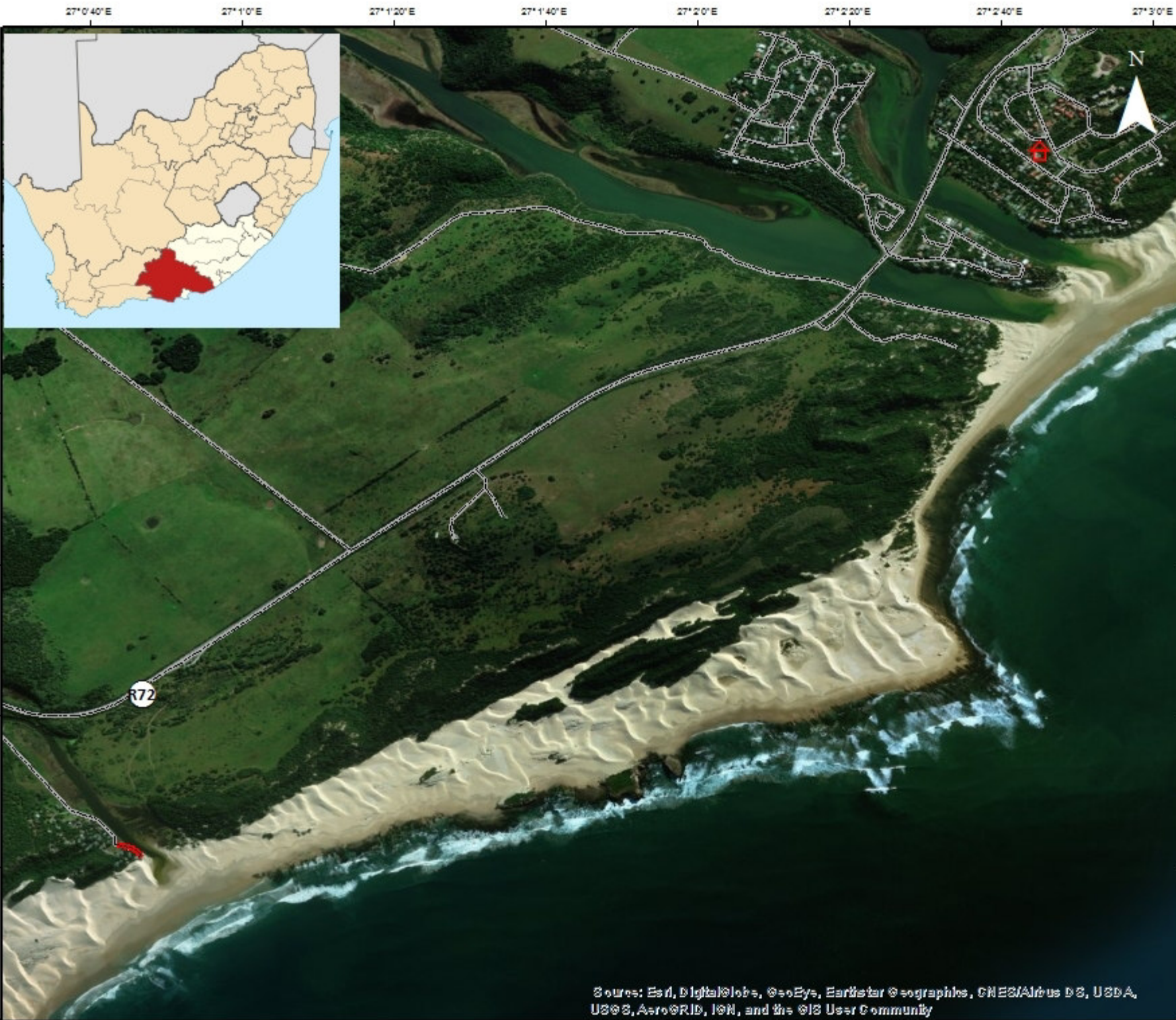


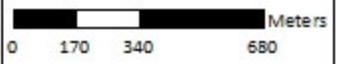
APPENDIX A: SITE PLANS



PROJECT DETAILS

Riet River Access Road
 Project code: 4797
 Drawn by: Kim Brent

SCALE



MAP TITLE

Locality map

MAP FEATURES

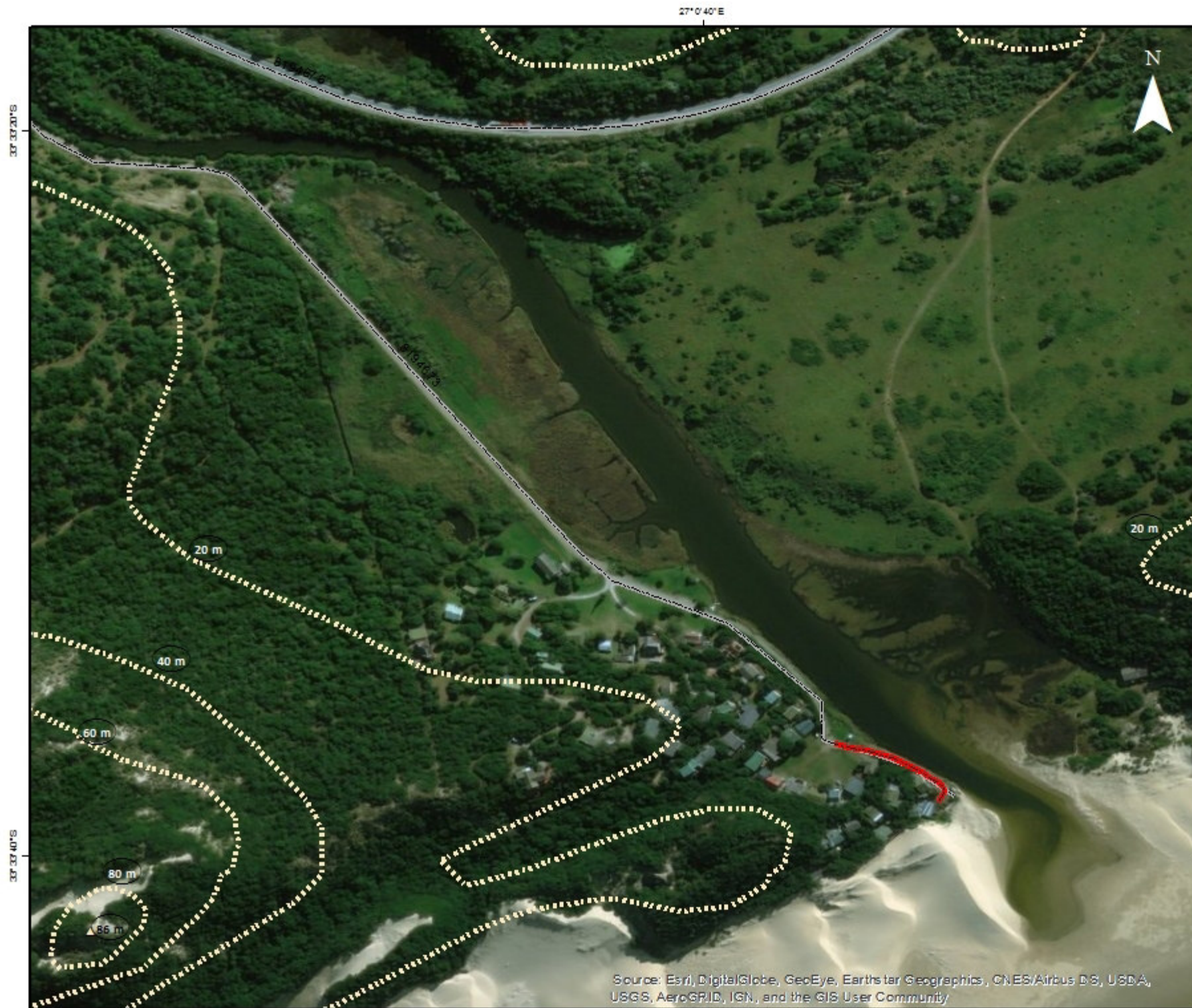
- Section of road under investigation
- Riet River
- Eastern Cape Province
- Ndlambe Municipality
- Seafield

DATUM

WGS 84

PREPARED FOR





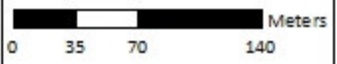
Source: Esri, DigitalGlobe, GeoEye, Earthstar Geographics, CNES/Airbus DS, USDA, USGS, AeroGRID, IGN, and the GIS User Community



PROJECT DETAILS

Riet River Access Road
 Project code: 4797
 Drawn by: Kim Brent

SCALE



MAP TITLE

Topographical map

MAP FEATURES

- Section of road under investigation
- Riet River
- Contours
- 20 m contours

DATUM

WGS 84

PREPARED FOR

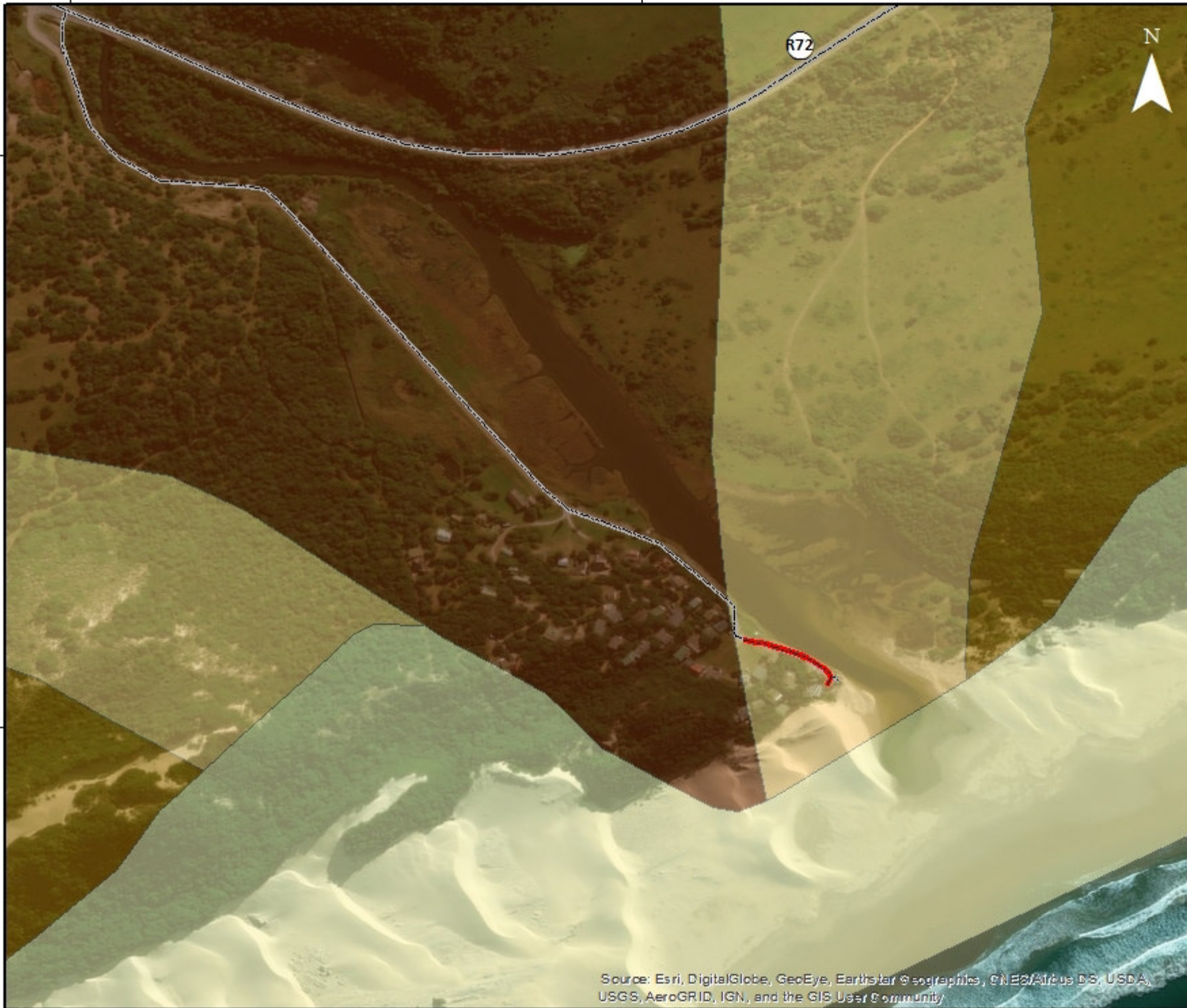


27° 0' 20" E

27° 0' 40" E

33° 33' 20" S

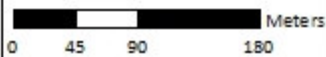
33° 33' 40" S



PROJECT DETAILS

Riet River Access Road
 Project code: 4797
 Drawn by: Kim Brent

SCALE



MAP TITLE

Geology

MAP FEATURES

- Section of road under investigation
- Riet River
- SA Geological lithologies
 - Quartenary sediments
 - Alexandria formation
 - Nananga formation
 - Witterberg group

DATUM

WGS 84

PREPARED FOR



Source: Esri, DigitalGlobe, GeoEye, Earthstar Geographics, CNES/Airbus DS, USDA, USGS, AeroGRID, IGN, and the GIS User Community

27° 0' 20" E

27° 0' 40" E

33° 33' 20" S

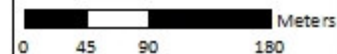
33° 33' 40" S



PROJECT DETAILS

Riet River Access Road
 Project code: 4797
 Drawn by: Kim Brent

SCALE



MAP TITLE

Surfacewater map

MAP FEATURES

-  Section of road under investigation
-  Riet River
-  NFEPA wetlands (2014)
-  Natural, Unchannelled valley-bottom wetland
-  Riet River Estuary

DATUM

WGS 84

PREPARED FOR



Source: Esri, DigitalGlobe, GeoEye, Earthstar Geographics, CNES/Airbus DS, USDA, USGS, AeroGRID, IGN, and the GIS User Community

27° 0' 20" E

27° 0' 40" E

33° 33' 20" S

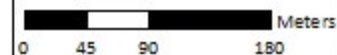
33° 33' 40" S



PROJECT DETAILS

Riet River Access Road
 Project code: 4797
 Drawn by: Kim Brent





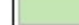
SCALE



MAP TITLE

National vegetation map

MAP FEATURES

-  Section of road under investigation
-  Riet River
- Mucina & Rutherford (2006-2012) vegetation types
 -  Albany Coastal Belt
 -  Albany Dune Strandveld
 -  Cape Seashore Vegetation

DATUM

WGS 84

PREPARED FOR

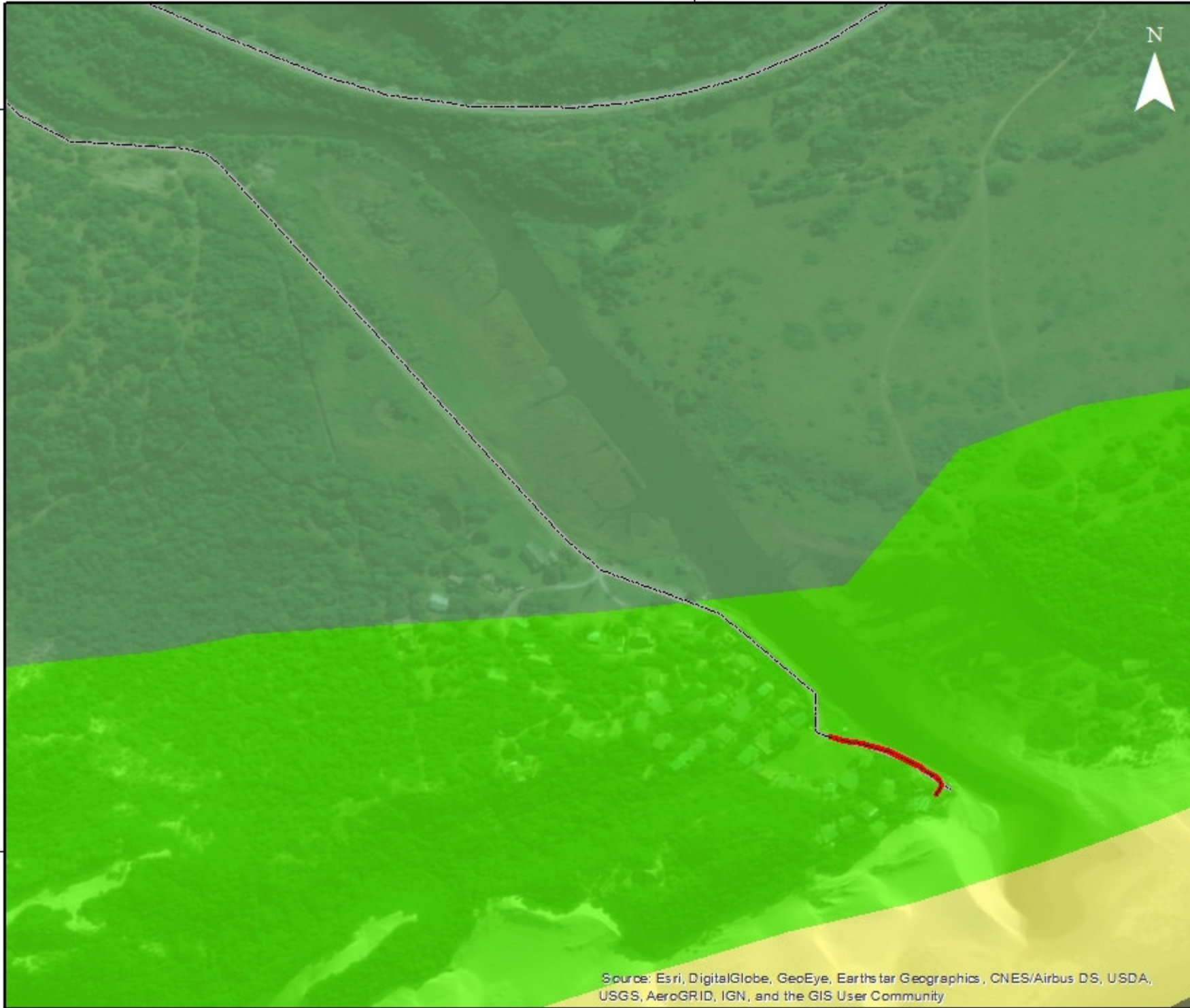


Source: Esri, DigitalGlobe, GeoEye, Earthstar Geographics, CNES/Airbus DS, USDA, USGS, AeroGRID, IGN, and the GIS User Community

27° 0' 40" E

30° 33' 20" S

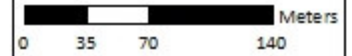
30° 33' 40" S



PROJECT DETAILS

Riet River Access Road
 Project code: 4797
 Drawn by: Kim Brent


SCALE



MAP TITLE

Topographical map


MAP FEATURES


 Section of road under investigation

 Riet River

STEP vegetation (2006)

 Albany Dune Thicket

 Kasouga Dune Thicket

 South East Coastal Vegetation

DATUM

WGS 84

PREPARED FOR



Source: Esri, DigitalGlobe, GeoEye, Earthstar Geographics, CNES/Airbus DS, USDA, USGS, AeroGRID, IGN, and the GIS User Community

27° 0' 20" E

27° 0' 40" E

33° 33' 20" S

33° 33' 40" S

33° 33' 20" S

33° 33' 40" S



PROJECT DETAILS

Riet River Access Road
 Project code: 4797
 Drawn by: Kim Brent

SCALE

Meters

MAP TITLE

Aquatic CBAs

MAP FEATURES

- Section of road under investigation
- Riet River
- ECBCP (2007)
- Estuarine CBA 2

DATUM

WGS 84

PREPARED FOR

Source: Esri, DigitalGlobe, GeoEye, Earthstar Imagery, © NASA/Airbus DS, USDA, USGS, AeroGRID, IGN, and the GIS User Community

27° 0' 20" E

27° 0' 40" E

33° 33' 20" S

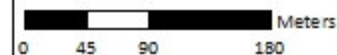
33° 33' 40" S



PROJECT DETAILS

Riet River Access Road
 Project code: 4797
 Drawn by: Kim Brent






SCALE



MAP TITLE

Terrestrial CBAs

MAP FEATURES

-  Section of road under investigation
-  Riet River
-  ECBCP (2007)
-  CBA 1
-  CBA 2

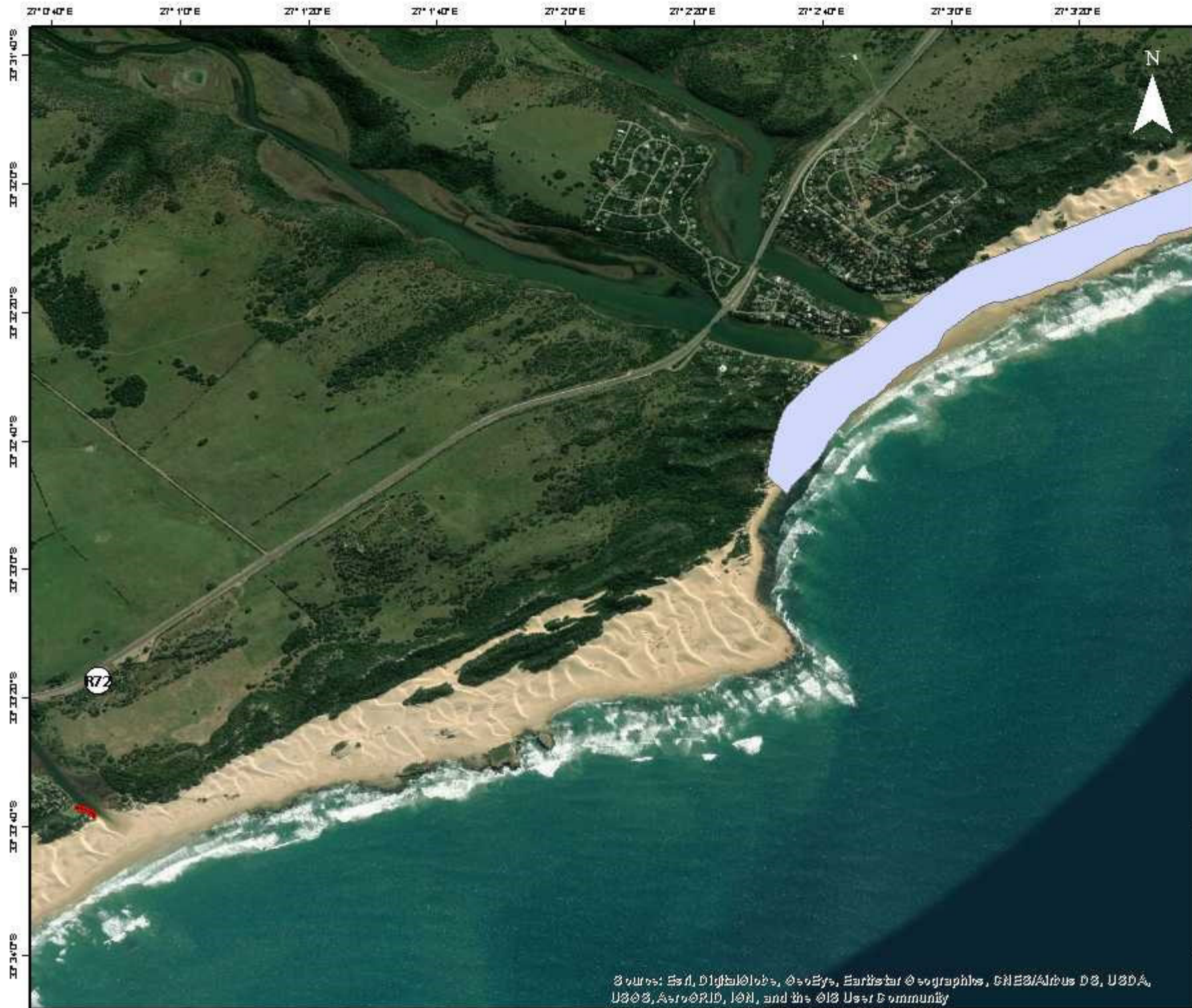
DATUM

WGS 84

PREPARED FOR



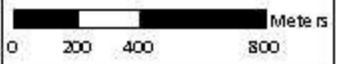
Source: Esri, DigitalGlobe, GeoEye, Earthstar Geographics, CNES/Airbus DS, USDA, USGS, AeroGRID, IGN, and the GIS User Community



PROJECT DETAILS

Riet River Access Road
 Project code: 4797
 Drawn by: Kim Brent



SCALE



MAP TITLE

Protected Areas

MAP FEATURES

-  Section of road under investigation
-  Waters Meeting Nature Reserve

DATUM

WGS 84

PREPARED FOR



Source: Esri, DigitalGlobe, GeoEye, Earthstar Geographics, CNES/Airbus DS, USDA, USGS, AeroGRID, IGN, and the GIS User Community